

ORDINANCE 493

AN ORDINANCE AMENDING THE CODE OF ORDINANCES OF THE CITY OF CRESCO, IOWA, BY AMENDING CHAPTERS 3.01(2), 3.02 AND 3.03 ESTABLISHING NEW VOTING PRECINCTS AND WARDS WITHIN THE CITY OF CRESCO, IOWA

BE IT ENACTED by the City Council of the City of Cresco, Iowa:

SECTION 1. SECTIONS MODIFIED. Chapter 3.01(2), 3.02 and 3.03 of the Code of Ordinances of the City of Cresco, Iowa, is repealed and the following adopted in lieu thereof establishing precincts and wards within the City of Cresco, Iowa:

**3.01 DEFINITIONS.** For the purposes of this chapter, unless the context otherwise requires:

2. "Census Day" means April 1, 2020, the official date of the 2020 United States Decennial Census.

**3.02 WARDS ESTABLISHED.** The City is hereby divided into three Wards, as follows:

1. The First Ward shall consist of that territory bounded by a line as follows:

Beginning at the West Corporate Limit Line on 2<sup>nd</sup> Ave SW (State Highway 9), then East along 2<sup>nd</sup> Ave SW (State Highway 9) to the intersection of 2<sup>nd</sup> Ave SW (State Highway 9) and South Elm St, then North to the intersection of 1<sup>st</sup> Ave East and North Elm St, then continue North along North Elm St to the intersection of North Elm St and North Park Pl, then East along North Park Place to the intersection of North Park Place and 2<sup>nd</sup> St East, then South along 2<sup>nd</sup> St East to the intersection of 2<sup>nd</sup> St East and 2<sup>nd</sup> Ave East, then East along 2<sup>nd</sup> Ave East to the intersection of 2<sup>nd</sup> Ave East and 3<sup>rd</sup> St East, then North along 3<sup>rd</sup> St East to the intersection of 3<sup>rd</sup> St East and 3<sup>rd</sup> Ave East, then East along 3<sup>rd</sup> Ave East to the intersection of 3<sup>rd</sup> Ave East and 8<sup>th</sup> St East, then North along 8<sup>th</sup> St East to the intersection of 8<sup>th</sup> St East and 7<sup>th</sup> Ave East, then East along 7<sup>th</sup> Ave East to the Corporate Limit Line, then South along the Corporate Limit Line to the South Corporate Limit Line (110<sup>th</sup> St), then West along the Corporate Limit Line to the West Corporate Limit Line, then North along the West Corporate Limit Line to point of beginning on 2<sup>nd</sup> Ave SW (State Highway 9), all of which is part of the Iowa Senate District #32 and Iowa House District #63 and Congressional District #2.

2. The Second Ward shall consist of that territory bounded by a line as follows:

Beginning at the intersection of 12th Ave E and Division St, then South along Division St to the intersection of Division St and 10th Ave, then East along 10th Ave to the intersection of 10th Ave and North Elm St, then South along North Elm St to the intersection of North Elm St and North Park Place, then East along North Park Place to the intersection of North

Park Place and 2nd St East, then South along 2nd St East to the intersection of 2nd St East and 2nd Ave East, then East on 2nd Ave East to the intersection of 2nd Ave East and 3rd St East, then North on 3rd St East to the intersection of 3rd St East and 3rd Ave East, then East along 3rd Ave East to the intersection of 3rd Ave East and 8th St East, then North along 8th St East to the intersection of 8th St East and 7th Ave East, then East along 7th Ave East to Corporate Limit Line, then North along Corporate Limit Line to 12th Ave East, then West along 12th Ave East to the intersection of 12th Ave East and Division St being the point of beginning, all of which is part of the Iowa Senate District #32 and Iowa House District #63 and Congressional District #2.

3. The Third Ward shall consist of that territory bounded by a line as follows:

Beginning at the intersection of 12th Ave West and Division St, then South along Division St to the intersection of Division St and 10th Ave, then East along 10th Ave to the intersection of 10th Ave and North Elm St, then South along North Elm St to the intersection of North Elm St and 2nd Ave SW (State Highway 9), then West along 2nd Ave SW (State Highway 9) to the West corporate limits, then North along the West Corporate Limit Line to the North Corporate Limit Line, then East along the North Corporate Limit Line to the intersection of 12th Ave West and Division St, being the point of beginning, all of which is part of the Iowa Senate District #32 and Iowa House District #63 and Congressional District #2.

**3.03 PRECINCTS ESTABLISHED.** The City is hereby divided into four (4) Precincts as follows:

1. The First Ward is hereby divided into two (2) Precincts as follows:

- A. Precinct 1A shall consist of that territory bounded by a line as follows:

Beginning at the West Corporate Limit Line on 2<sup>nd</sup> Ave SW (State Highway 9), then East along 2<sup>nd</sup> Ave SW (State Highway 9) to the intersection of 2<sup>nd</sup> Ave SW (State Highway 9) and South Elm St, then North to the intersection of 1<sup>st</sup> Ave East and North Elm St, then continue North along North Elm St to the intersection of North Elm St and North Park Pl, then East along North Park Place to the intersection of North Park Place and 2<sup>nd</sup> St East, then South along 2<sup>nd</sup> St East to the intersection of 2<sup>nd</sup> St East and 2<sup>nd</sup> Ave East, then East along 2<sup>nd</sup> Ave East to the intersection of 2<sup>nd</sup> Ave East and 3<sup>rd</sup> St East, then North along 3<sup>rd</sup> St East to the intersection of 3<sup>rd</sup> St East and 3<sup>rd</sup> Ave East, then East along 3<sup>rd</sup> Ave East to the intersection of 3<sup>rd</sup> Ave East and 8<sup>th</sup> St East, then North along 8<sup>th</sup> St East to the intersection of 8<sup>th</sup> St East and 7<sup>th</sup> Ave East, then East along 7<sup>th</sup> Ave East to the Corporate Limit Line, then South along the Corporate Limit Line to 2<sup>nd</sup> Ave SE (State Highway 9), then West along 2<sup>nd</sup> Ave SE (State Highway 9) to the intersection of 2<sup>nd</sup> Ave SE (State Highway 9) and 5<sup>th</sup> St SE, then South along 5<sup>th</sup> St SE to the intersection of 5<sup>th</sup> St SE and 3<sup>rd</sup> Ave SE, then West along 3<sup>rd</sup> Ave SE

to the intersection of 3<sup>rd</sup> Ave SE and 3<sup>rd</sup> St SW, then South along 3<sup>rd</sup> St SW to the intersection of 3<sup>rd</sup> St SW and 4<sup>th</sup> Ave SW, then West along 4<sup>th</sup> Ave SW to the intersection of 4<sup>th</sup> Ave SW and the Vernon Road, then South along the Vernon Road to the West Corporate Limit Line, then North along the West Corporate Limit Line to 2<sup>nd</sup> Ave SW (State Highway 9) to the point of beginning.

- B. Precinct 1B shall consist of that territory located in Ward 1 and not included in Precinct 1A.
2. Precinct 2 shall consist of all the area located in Ward 2.
  3. Precinct 3 shall consist of all the area located in Ward 3.

SECTION 2. SEVERABILITY CLAUSE. If any section, provision or part of this ordinance shall be adjudged invalid or unconstitutional, such adjudication shall not affect the validity of the ordinance as a whole or any section, provision or part thereof not adjudged invalid or unconstitutional.

SECTION 3. WHEN EFFECTIVE. This ordinance shall be in effect from and after its final passage, approval and publication as provided by law and effective for elections held after January 15, 2022.

PASSED AND APPROVED THIS \_\_\_\_\_ DAY OF \_\_\_\_\_, 2021.

\_\_\_\_\_  
Mayor Pro-Tem Amy Bouska

ATTEST: \_\_\_\_\_  
City Clerk Michelle Elton

1<sup>st</sup> Reading 11/15/2021      2<sup>nd</sup> Reading \_\_\_\_\_      3<sup>rd</sup> Reading \_\_\_\_\_

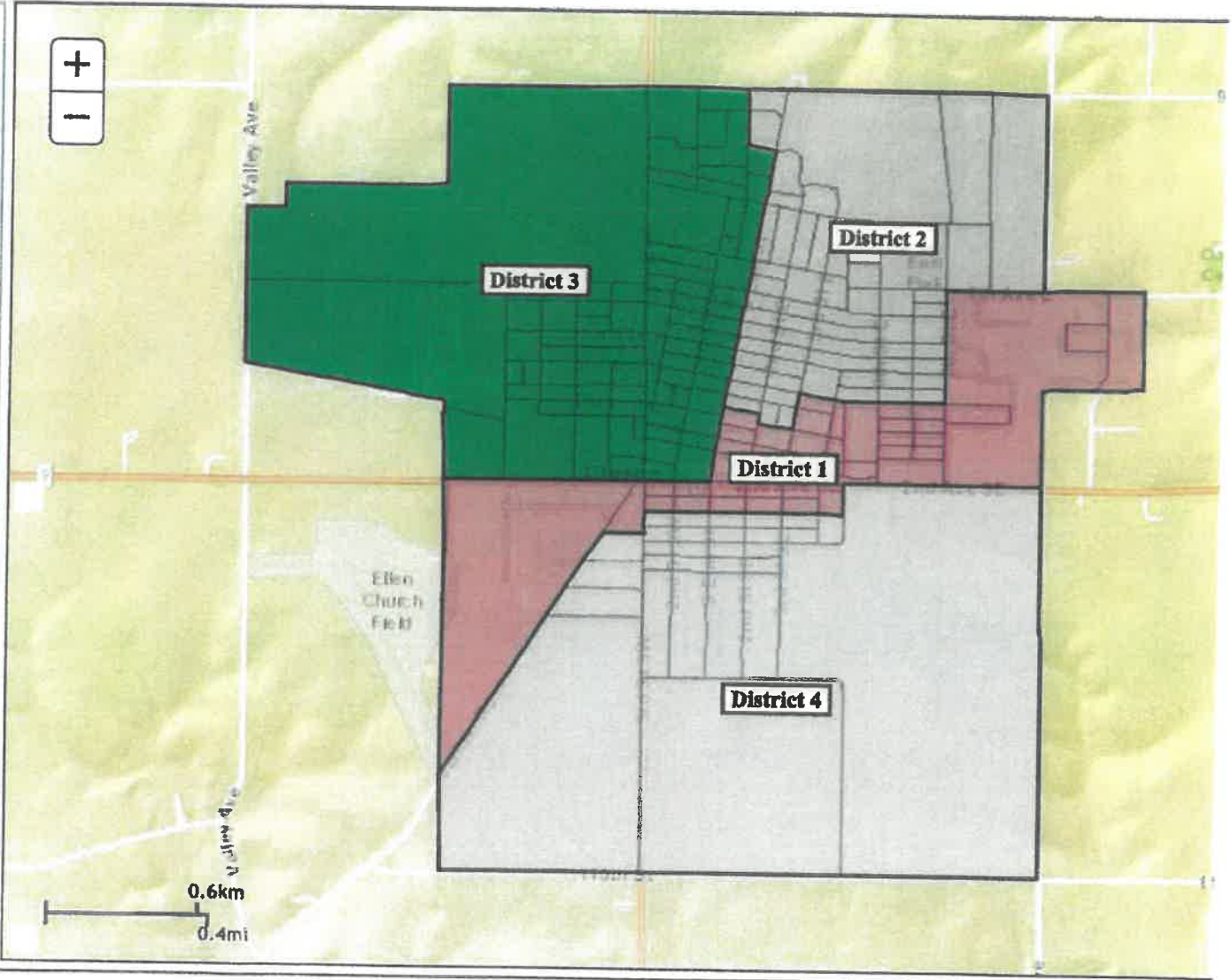
I certify that a summary of the foregoing was published as Ordinance No. 493 on the \_\_\_\_\_ day of \_\_\_\_\_, 2021.

ATTEST: \_\_\_\_\_  
City Clerk Michelle Elton

Redistricting Online 2.36

File Learn View Create Review Share Submit

New Open Save Save As Archive Open Local Save Local Quick Print Print Plan Book Import Export Plans Local Plans Print Interchange



District	Color	Hide	Lock	TOTAL	TARGET_DEV	City
Unassigned	<input type="checkbox"/>			0	0	
District 1	<input type="checkbox"/>	Ward 1(A)		588	1309	-384 13 Ward 1(Combined)
District 2	<input type="checkbox"/>	Ward 2		1,301	329	5
District 3	<input type="checkbox"/>	Ward 3		1,278	306	-18
District 4	<input type="checkbox"/>	Ward 1(B)		721	251	